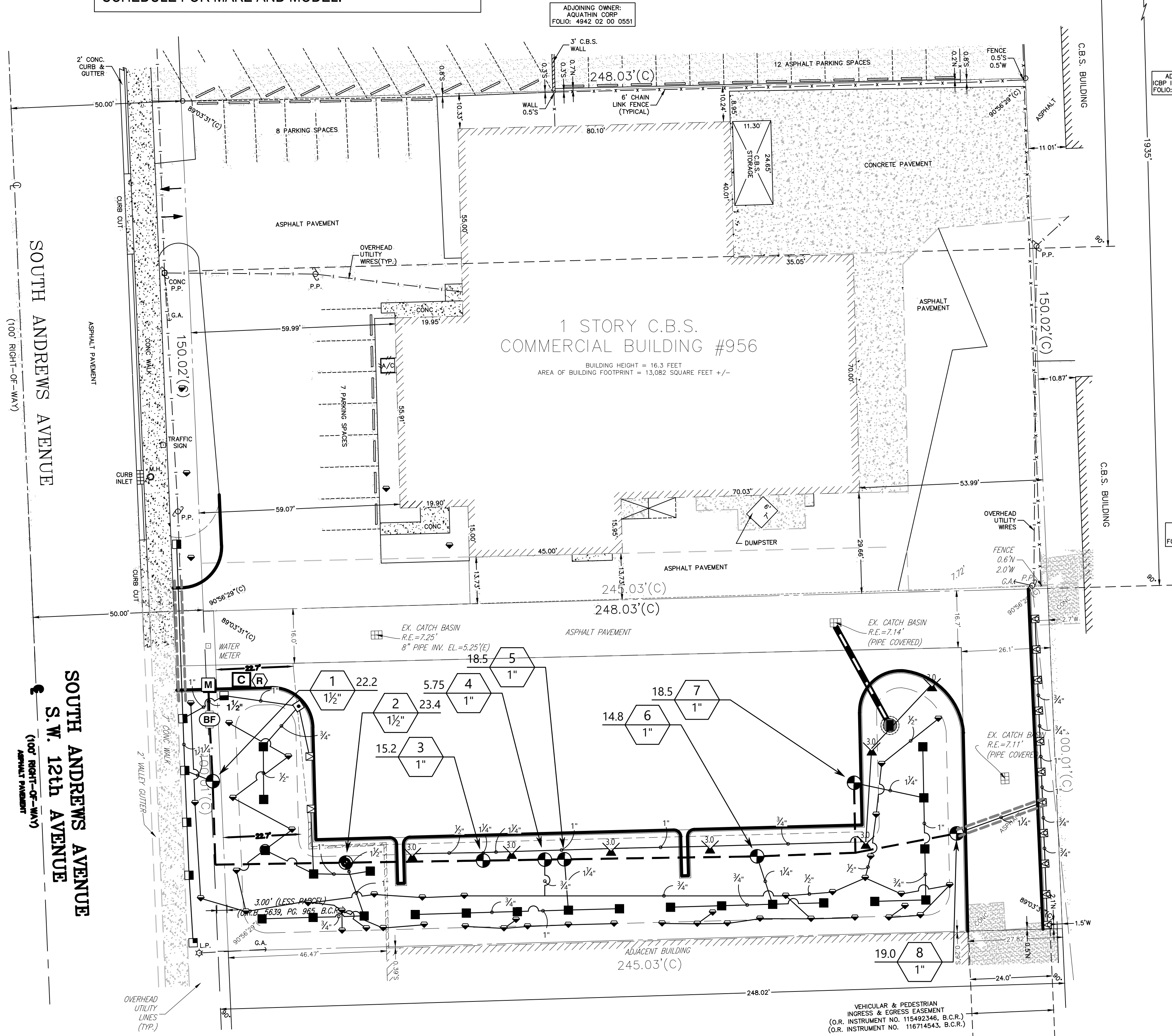


IRRIGATION FOR EXISTING BUILDING TO BE  
INSPECTED AND REPAIRED, IF NECESSARY, BY  
IRRIGATION CONTRACTOR. SYSTEM SHOULD BE IN  
GOOD WORKING ORDER AND PROVIDE REQUIRED  
COVERAGE. ADD BUBBLERS AT NEW TREE  
LOCATIONS AS REQUIRED BY CODE. SEE IRRIGATION  
SCHEDULE FOR MAKE AND MODEL.



IRRIGATION SYSTEM TO PROVIDE 100%  
COVERAGE WITH 50% OVERLAP.

PLEASE REFER TO SHEET IR.02 FOR  
IRRIGATION DETAILS AND NOTES

## IRRIGATION SCHEDULE

SYMBOL	MANUFACTURER/MODEL/DESCRIPTION	QTY	PSI		
	Rain Bird 1806-PRS 15 Strip Series Turf Spray 6" popup with pressure regulator.	2	30		
	Rain Bird 1806-PRS 15 Strip Series Turf Spray 6" popup with pressure regulator.	11	30		
	Rain Bird 1806-PRS 15 Series MPR Turf Spray 6" popup with pressure regulator.	29	30		
	Rain Bird 1806-PRS ADJ Turf Spray 6" popup with pressure regulator.	1	30		
	Rain Bird 1802-1400 Flood Flood Bubbler 2in. popup, install w/ PA-80 adapter.	48	40		
SYMBOL	MANUFACTURER/MODEL/DESCRIPTION	QTY	PSI	GPM	RADIUS
	Rain Bird 3500-S 3.0 Shrub Rotor, adjustable and full circle	7	25	2.17	29'
SYMBOL	MANUFACTURER/MODEL/DESCRIPTION	QTY			
	Rain Bird PESB-PRS-D 1-1/2" 1in., 1-1/2in., 2in., 3in., 3in. Plastic Industrial Remote Control Valve. Low Flow Operating Capability, Globe Configuration. With Pressure Regulating Module, and Scrubber Technology for Reliable Performance in Dirty Water Irrigation Applications.	2			
	Rain Bird PESB-PRS-D 1" 1in., 1-1/2in., 2in., 3in., 3in. Plastic Industrial Remote Control Valve. Low Flow Operating Capability, Globe Configuration. With Pressure Regulating Module, and Scrubber Technology for Reliable Performance in Dirty Water Irrigation Applications.	6			
	Febco 765 1" Pressure Vacuum Breaker, brass with ball valve SOV. Install 12in. 1 above highest downstream outlet and the highest point in the downstream piping.	1			
	Rain Bird ESPLXME2P-LXMM-LXMPED 12 Station, Traditionally-Wired Commercial Controller w/ Factory Installed PRO Smart Module. Indoor/Outdoor, Plastic Wall-Mount Enclosure. Install in LXMM-LXMPED Powder Coated, Metal Wall-Mounted Cabinet w/ Pedestal.	1			
	Rain Bird RSD-BEX Rain Sensor, with metal latching bracket, extension wire.	1			
	Water Meter 3/4" New 3/4" Water Meter	1			
	Irrigation Lateral Line: PVC Class 160 SDR 26	26.2 lf			
	Irrigation Lateral Line: PVC Class 160 SDR 26 1/2"	922.6 lf			
	Irrigation Lateral Line: PVC Class 160 SDR 26 3/4"	238.1 lf			
	Irrigation Lateral Line: PVC Class 160 SDR 26 1"	168.6 lf			
	Irrigation Lateral Line: PVC Class 160 SDR 26 1 1/4"	102.7 lf			
	Irrigation Lateral Line: PVC Class 160 SDR 26 1 1/2"	13.6 lf			
	Irrigation Mainline: PVC Class 200 SDR 21 1 1/2"	291.7 lf			
	Pipe Sleeve: PVC Schedule 80 Typical pipe sleeve for irrigation pipe. Pipe sleeve size shall allow for irrigation piping and their related couplings to easily slide through sleeving material. Extend sleeves 18 inches beyond edges of paving or construction.	62.1 lf			

## VALVE SCHEDULE

NUMBER	MODEL	SIZE	TYPE	GPM	HEADS	PIPE	WIRE	DESIGN PSI	FRICTION LOSS	PSI	PSI @ POC	PRECIP
1	Rain Bird PESB-PRS-D	1-1/2"	Turf Spray	22.16	11	215.4	38.7	30	1.59	35.4	48.2	0.82 in/h
2	Rain Bird PESB-PRS-D	1-1/2"	Turf Spray	23.41	7	98.2	101.5	30	0.96	34.8	49.3	0.87 in/h
3	Rain Bird PESB-PRS-D	1"	Shrub Rotor	15.19	7	189.7	141.8	25	2.72	30.1	38.2	0.55 in/h
4	Rain Bird PESB-PRS-D	1"	Bubbler	5.75	23	356.3	159.9	40	1.33	43.0	47.2	0.87 in/h
5	Rain Bird PESB-PRS-D	1"	Turf Spray	18.5	5	75.0	165.7	30	1.14	33.9	44.6	0.73 in/h
6	Rain Bird PESB-PRS-D	1"	Turf Spray	14.8	4	59.8	222.2	30	0.84	33.2	41.4	0.71 in/h
7	Rain Bird PESB-PRS-D	1"	Turf Spray	18.5	5	80.9	271.7	30	1.21	33.9	45.5	0.74 in/h
8	Rain Bird PESB-PRS-D	1"	Turf Spray	19.03	11	115.8	281.4	30	1.09	33.9	45.9	1.9 in/h
	Common Wire	1"					291.7					

## CRITICAL ANALYSIS

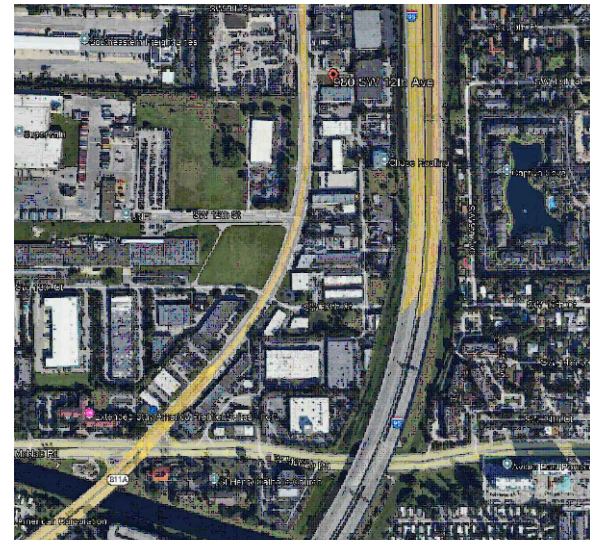
Generated:	2026-01-14 11:22
P.O.C. NUMBER: 02	
Water Source Information:	New 3/4" Water Meter
FLOW AVAILABLE	
Water Meter Size:	3/4"
Flow Available:	22.5 GPM
PRESSURE AVAILABLE	
Static Pressure at POC:	50 PSI
Elevation Change:	0.00 ft
Service Line Size:	3"
Length of Service Line:	20 ft
Pressure Available:	50 PSI

DESIGN ANALYSIS	
Maximum Station Flow:	23.41 GPM
Flow Available at POC:	22.5 GPM
Residual Flow Available:	-0.91 GPM

Critical Station:	2
Design Pressure:	30 PSI
Friction Loss:	0.96 PSI
Fittings Loss:	0 PSI
Elevation Loss:	0 PSI
Loss through Valve:	9.8 PSI
Pressure Req. at Critical Station:	34.8 PSI
Loss for Fittings:	0 PSI
Loss for Main Line:	1.01 PSI
Loss for POC to Valve Elevation:	0 PSI
Loss for Backflow:	4.47 PSI
Loss for Water Meter:	9.09 PSI
Critical Station Pressure at POC:	49.3 PSI
Pressure Available:	50 PSI
Residual Pressure Available:	0.67 PSI

## WATERING SCHEDULE

NUMBER	MODEL	TYPE	PRECIP	IN./WEEK	MIN./WEEK	GAL./WEEK	GAL./DAY
1	Rain Bird PESB-PRS-D	Turf Spray	0.78 in/h	1	77	1,613	
2	Rain Bird PESB-PRS-D	Turf Spray	0.85 in/h	1	71	1,576	
3	Rain Bird PESB-PRS-D	Shrub Rotor	0.55 in/h	1	109	1,656	
4	Rain Bird PESB-PRS-D	Bubbler	0.87 in/h	1	70	403	
5	Rain Bird PESB-PRS-D	Turf Spray	0.73 in/h	1	82	1,517	
6	Rain Bird PESB-PRS-D	Turf Spray	0.71 in/h	1	85	1,258	
7	Rain Bird PESB-PRS-D	Turf Spray	0.74 in/h	1	81	1,499	
8	Rain Bird PESB-PRS-D	Turf Spray	1.9 in/h	1	32	609	
TOTALS:					607	10,130	



LOCUS MAP  
NTS.

THIS DOCUMENT, AS AN INSTRUMENT OF SERVICE, IS THE SOLE PROPERTY OF WDA DESIGN GROUP, INC. ITS USE BY THE OWNER FOR OTHER PROJECTS OR FOR COMPLETION OF THIS PROJECT BY OTHERS IS STRICTLY FORBIDDEN. DISTRIBUTION IN CONNECTION WITH THIS PROJECT SHALL NOT BE CONSTRUED AS PUBLICATION IN DEROGATION OF WDA DESIGN GROUP'S RIGHTS. ©2024, WDA DESIGN GROUP, INC.

3	01/14/26	FENCE SHIFT	MDG
2	0/29/2025	2nd DRC COMMENTS	MDG
1	9/15/2025	INITIAL DRC COMMENTS	MDG
A		INITIAL ISSUE	
REV.	DATE	DESCRIPTION	INIT.



PREPARED BY:

**WDA**  
DESIGN  
GROUP

31 EAST MAIN STREET WESTBOROUGH, MA |  
508.366.6552  
WDA-DG.COM

OWNER:

**JOEFFRAN**  
INVESTMENTS

PREPARED FOR:

**THOMAS ENGINEERING**  
GROUP  
6300 NW 31ST AVE  
FORT LAUDERDALE, FL 33309  
BROWARD COUTY, FL

TITLE:

**IRRIGATION PLAN**

**980 SW 12TH AVE**  
POMPANO BEACH, FL

DRC

SCALE: 1" = 20'

JOB NO.:	1632	DATE:	04/15/25
DWN. BY:	MDG	SHEET:	IR.01
CHK'D BY:	MDG		